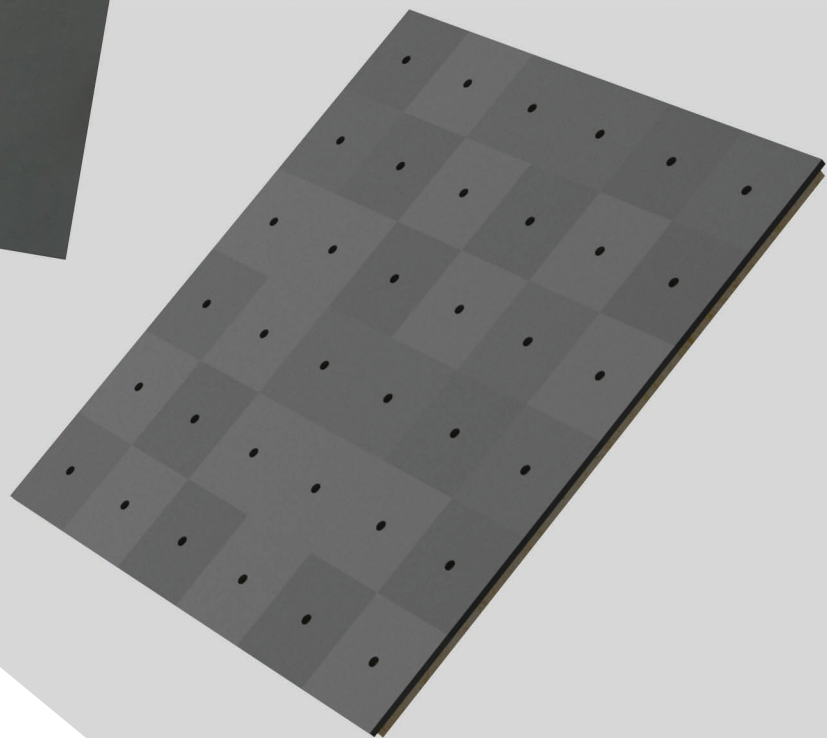
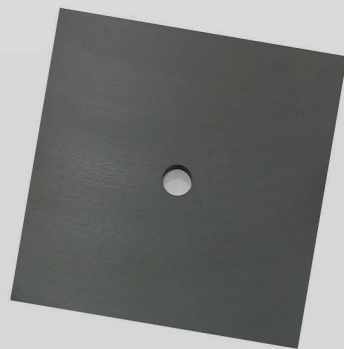


Ferrite Tile Absorber



GLOBAL EMC
ELECTROMAGNETIC SHIELDING & ANECHOICS EST. 1994

Ferrite Tile Absorber

GF102 (single tile) and GF102b
(pre-mounted on 600mmx600mm particle board)

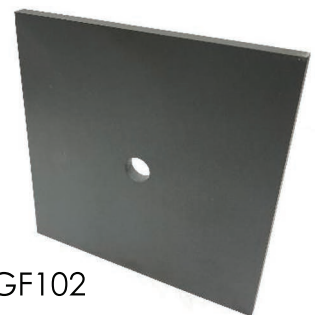
Overview

Global EMC Ferrite tile GF102 are used around the world in the most demanding performance applications where the required performance includes frequencies below 100 MHz (mostly EMC where the test spectrum starts at 30 MHz) to ~1 GHz.

Most resistive structure absorbers work on progressive impedance where the absorbers strive to mimic free space via the shape & resistivity this leaves these absorbers weak when the wave becomes very long at low frequency. Ferrite tiles do not work on progressive impedance but instead use magnetic permeability where the structural domains in the material which have a polarized bias is affected by rotating against the oscillating wave and thus absorbing the radiated energy.

The GF 102 tiles have the optimum low and high frequency return loss performance and compliment the pyramidal hybrid absorbers (doped foam GDSxxx-H3 or RLT450/RLT650 doped polystyrene). Ferrite tiles are manufactured to the highest standard, ensuring a precise edge and a minimal gap between adjacent tiles.

- Non-flammable characteristic suitable for immunity testing
- Long lifespan with good performance stability
- Broadband performance of 30 MHz to 1 GHz
- 10mm diameter centre fixing hole
- Nickel-Zinc composition



GF102

| Part No. | Description | Ferrite tiles per unit | Weight per unit (Kg) | Dimensions | | |
|----------|--|------------------------|----------------------|-------------|------------|------------|
| | | | | Length (mm) | Width (mm) | Depth (mm) |
| GF102 | Single ferrite tile | 1 | 0.267 | 100 | 100 | 5.5 |
| GF102b | Ferrites pre-mounted on particle board | 36 | 8.86 | 600 | 600 | 18 |

Ferrite Tile Absorber

GF102 (single tile) and GF102b
(pre-mounted on 600mmx600mm particle board)

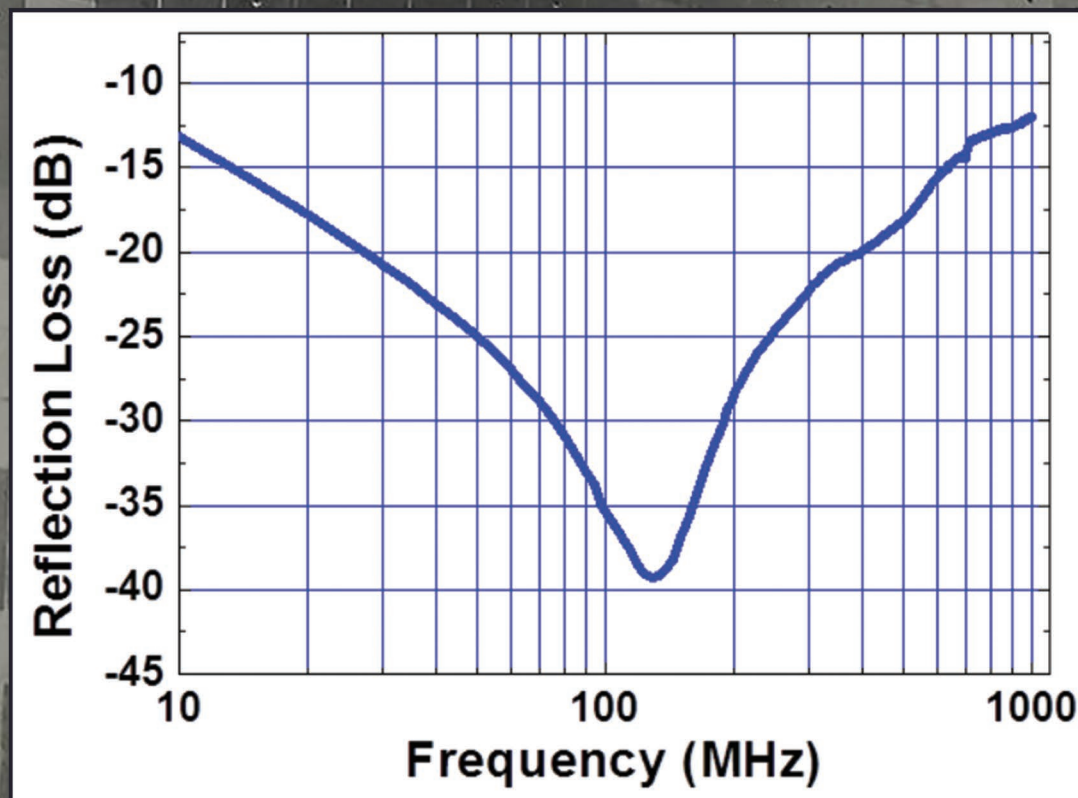
Specifications

Compatible Chamber Type/Applications:

**SAC-3m-C, SAC-10m-C, FAC-3m-PCE, FAC-3m-C, CISPR12/25-V,
CISPR12/25-C, MIL-STD461G, DEF-STAN59-411.**

GF102 Ferrite Tile - Performance Characteristics

| Material Characteristics | Specification |
|---|--|
| Effective saturation magnetic flux density | 260 mT |
| Effective saturation residual magnetic flux density | 100 mT |
| Initial permeability | 2000 |
| Effective saturation coercivity | 12 A/m |
| Relative loss factor | 25×10^{-6} |
| Relative temperature coefficient | $3 \sim 5 \times 10^{-6} / ^\circ\text{C}$ |
| Material | Nickel-Zinc |



GLOBAL EMC
ELECTROMAGNETIC SHIELDING & ANECHOICS EST. 1994

4A Hamilton Rd, Sutton-in-Ashfield, Nottinghamshire, NG17 5LD, United Kingdom

www.globalemcc.co.uk info@www.globalemcc.co.uk [+44\(0\)1623 755539](tel:+44(0)1623755539)