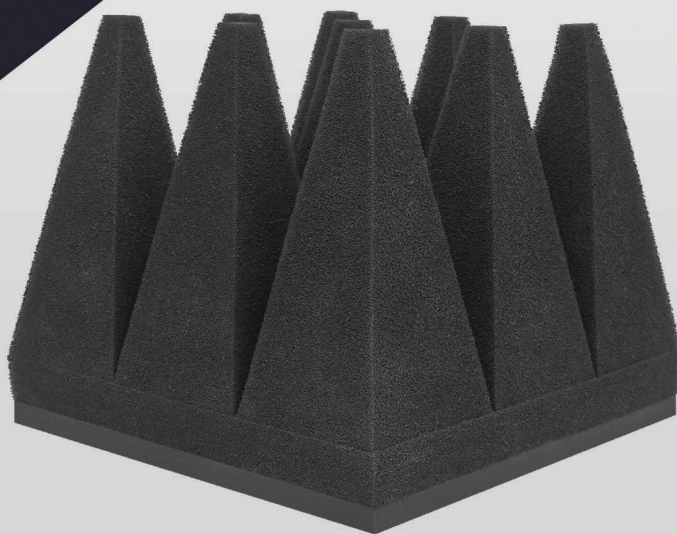


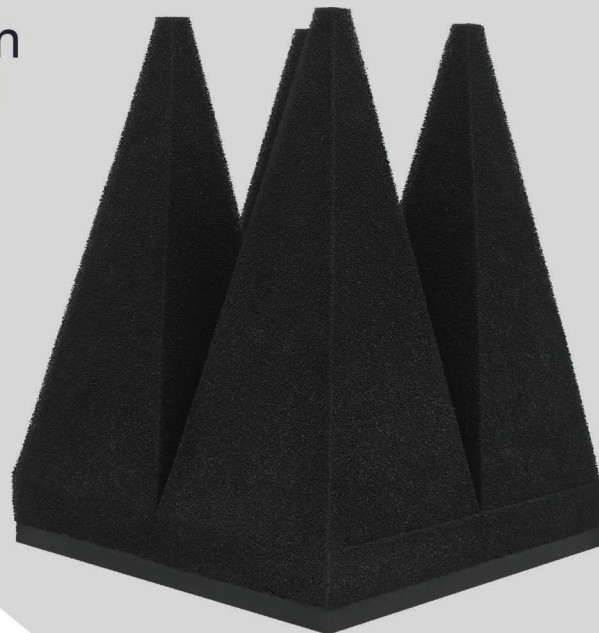
# Reticulated Foam

## PYRAMIDAL ABSORBERS

GDS-400-RTH and  
GDS-600-RTH



Bridging the gap between  
standard absorbers and  
honeycomb



# Applications

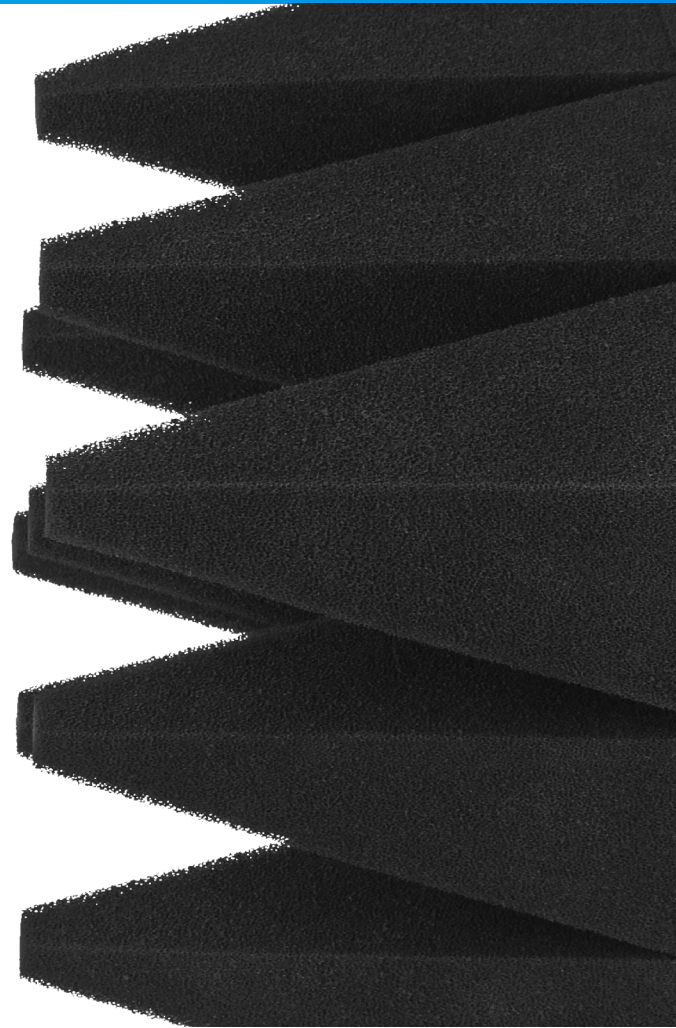
Superb power handling performance. Optimised return loss for anechoic chambers.

Designed for high power testing in anechoic test chambers and military test chambers.

## GDS-xxx-RTH Range Hybrid Absorber

Global EMC's GDS-xxx-RTH Range of hybrid absorbers are the latest development in Global EMC's range of anechoic material. Designed to bridge the gap between standard foam or Polystyrene absorbers and expensive honeycomb substrate absorbers. The GDS-xxx-RTH range offers high levels of power handling performance at a lower cost than honeycomb type absorbers. The absorbers use reticulated foam material to give the absorber the heat dissipation required to handle the higher levels of power.

Designed to be used in conjunction with Global EMC's GF102 Ferrite tiles, the GDS-xxx-RTH range offers an excellent solution for anechoic test chambers



Large open pore structure for greater heat dissipation

High power handling large open pore foam dissipates heat quickly and effectively. Able to withstand greater power than the standard GDS range the absorber is perfect for higher power testing.

Complimented by a white cap to give the absorber greater luminance inside of the chamber the pyramid is both aesthetically pleasing and high performing.

MODERN AND PROFESIONAL FARDAY CAGES/SHIELDED ROOMS/ANECHOIC CHAMBERS  
[www.globalemco.uk](http://www.globalemco.uk)

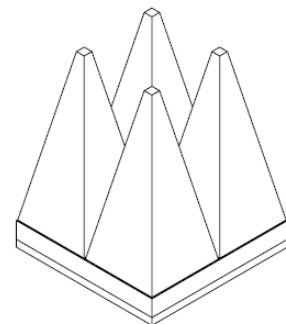
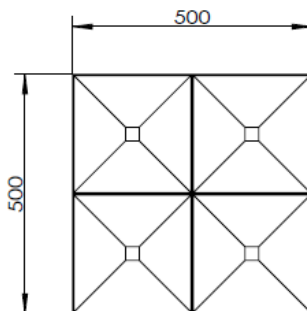
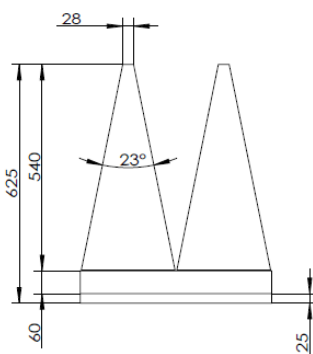
# Fire Safety

Test Report to confirm the materials used in the manufacturing of the supplied components are compliant with the standards NRL8093-1977

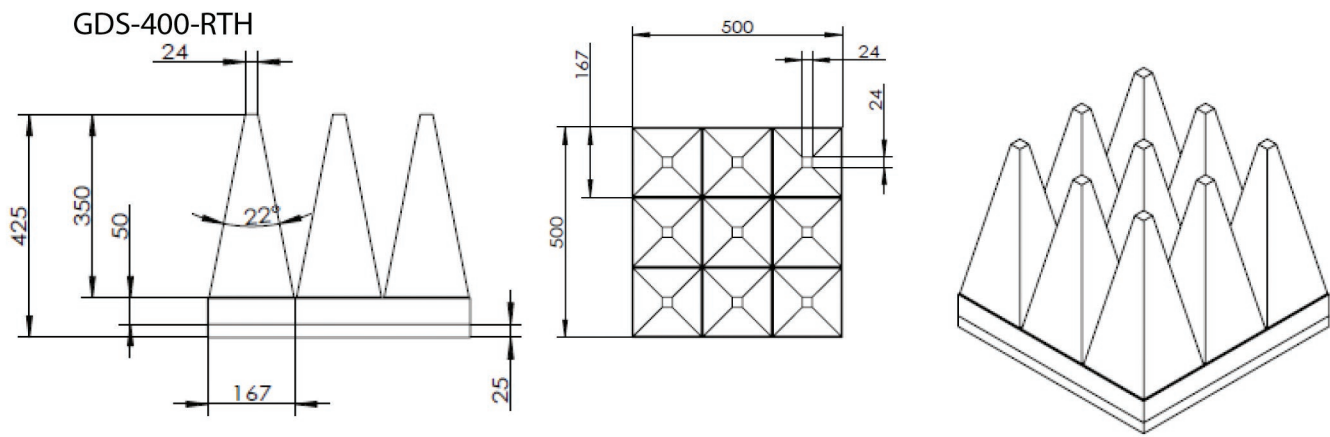
<b>Sample Name</b>	Reticulated Foam Absorber		
<b>Model</b>	GDS-RTH Type		
<b>Quantity Supplied</b>	944m <sup>2</sup>	<b>Production Date</b>	Nov 2020
<b>Sample Quantity</b>	3 PCS	<b>Date of Test</b>	21/12/2020
<b>Test</b>	<b>Test Undertaken</b>	<b>Conclusion</b>	
1	Compliance within 10'	Pass	
2	Compliance within 52'	Pass	
3a	Compliance with temp of pole @ 105°C	Pass	
3b	Weight of material remaining is 78%	Pass	
<b>Conclusion:</b>	The material identified in this report meets the performance specification for Anechoic Chamber materials as specified in the NRL Report 8093-1977. These products have 'Zero Halogens' in the manufacturing process.		

# Physical Properties

GDS-600-RTH



# Physical Properties



## Further Characteristics

Product Material	Fully open-cell polyurethane foam
Standard Colour	Black
Product height	425mm or 625mm
Working Temperature	-50 ° C to 80 ° C
Power Capacity	3000W/m <sup>2</sup>
Service Life	> 10 Years

Length	Part No.	Base Size mm	Weight kg						
				30 MHz	500 MHz	1.5 GHz	3 GHz	5 GHz	18 GHz
425mm	GDS-400-RTH	500 x 500mm	3.068kg	-20dB	-22dB	-30dB	-40dB	-45dB	-50dB
625mm	GDS-600-RTH	500 x 500mm	3.478kg	-25dB	-25dB	-35dB	-40dB	-45dB	-50dB

ALL PRODUCT, PRODUCT SPECIFICATIONS AND DATA ARE SUBJECT TO CHANGE WITHOUT NOTICE TO IMPROVE RELIABILITY, FUNCTION OR DESIGN OR OTHERWISE.