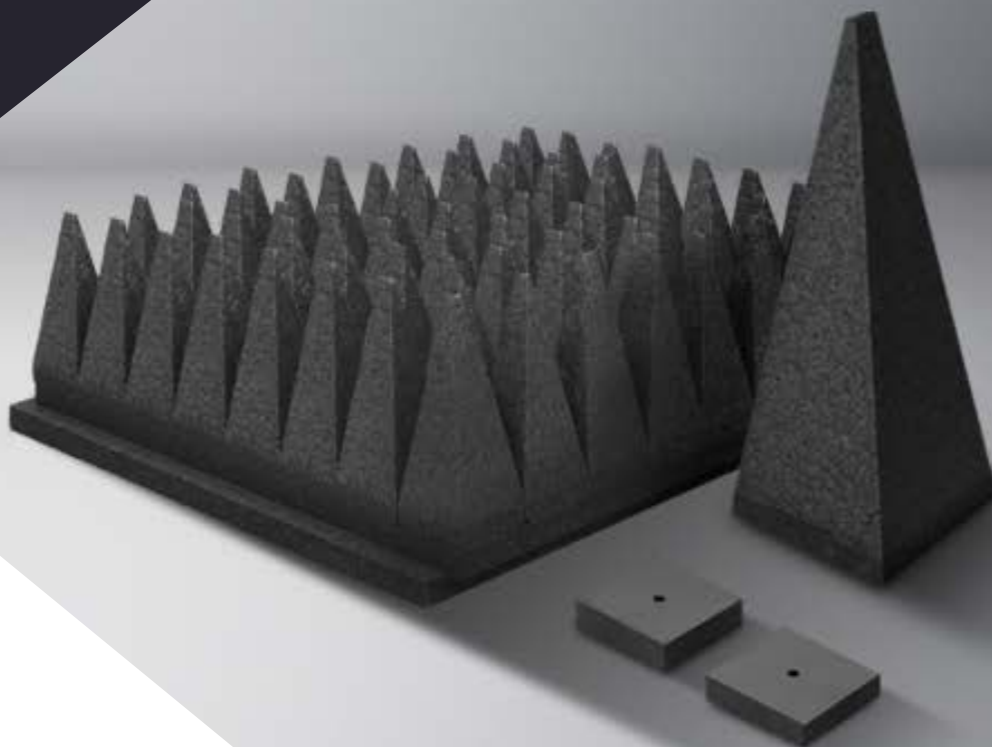


# RLT-Range Hybrid Absorber

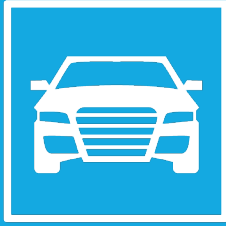
Next generation Hybrid  
Polystyrene Pyramidal absorbers



**GLOBAL EMC**  
ELECTROMAGNETIC SHIELDING & ANECHOICS EST. 1994

# Applications

Superb anechoic performance. Perfect uniform precision fit. 40+ year's lifespan. Optimised return loss performance.



Vehicle Testing



Military Testing



Fully Compliant



Anechoic Chambers

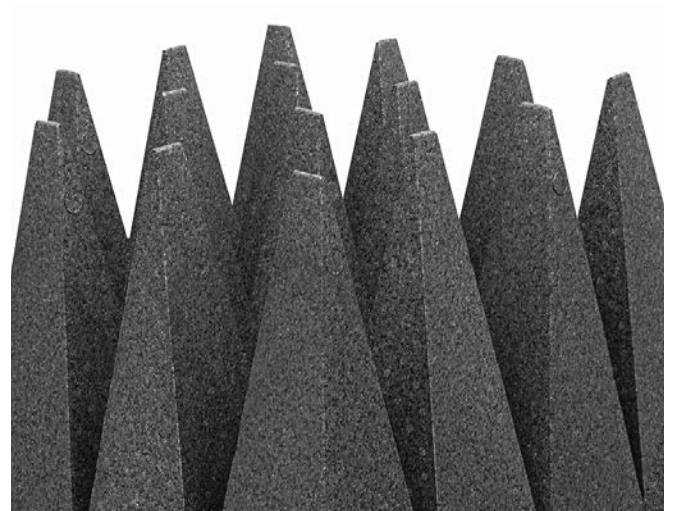
Designed for anechoic test chambers, military test chambers and vehicle test chambers

## RLT-Range Hybrid Absorber

The Global EMC RLT-Range is the latest development in anechoic pyramidal absorbers. The absorbers are specially designed to work in conjunction with Global EMC's GF 102 ferrite tiles.

The resistive doping is far less than normal pyramidal absorbers and is very specific.

There are 3 models in the RLT-range. The RLT-250, RLT-450 and RLT-650. The part number of the absorbers can easily be recognised by measuring the length of the absorber.



For example the RLT-450 relates to a length of 450mm from tip to base. The easy to install "plug-in" 600mm x 600mm base solution gives none reflective edges, perfect for higher frequency testing whilst also giving a uniform and precise fit every time. Modular in construction, the absorber bases fit perfectly to different sized test chambers and measurement rooms.

Designed primarily for EMC test chambers the range of absorbers can be found in Global EMC's SAC-3m-C, SAC-10m-C, FAC-3m-PCE, FAC-3m-C, CISPR12/25-V, CISPR12/25-C, MIL-STD461G, DEF-STAN59-411 chambers.

The long life expectancy of more than 40 years gives an excellent product lifespan with no carbon migration over time. High wear resistance is integral to the design but should accidental damage occur, each individual pyramid is quickly removable and replaceable without any specialist tools.

This minimises maintenance downtime and maximises the facilities operating time. Each absorber pyramid has high tensile strength with no deformation over time and a sharp and precise tip, perfect for higher frequencies. White end caps can be provided for aesthetic finish and to increase light reflectivity inside the chamber.

# Fire Safety

Fire safety is paramount in any anechoic chamber or test measurement facility. The RLT-Range of anechoic absorbers have been tested to ensure it's performance under fire conditions.

Each absorber is given an enhanced strengthening treatment during manufacturing for fire/flame resistance to meet UL94 - 2015 Section 8.

## Physical Properties

Model	Height (mm)	Weight (kg/m <sup>2</sup> )	Peaks Per Base	Base Size (mm)
RLT-250	250	4.7	64	600x600
RLT-450	450	8.7	16	600x600
RLT-650	650	13.6	9	600x600

## Performance

Length (mm)	Part No.	Base Size (mm)	Normal incidence return loss (-dB)						
			100 MHz	500 MHz	1.5 GHz	5 GHz	10 GHz	40 GHz	
250	RLT-250	600x600	16	18	13	14	15	30	
450	RLT-450	600x600	20	17	20	25	35	40	
650	RLT-650	600x600	22	20	22	28	40	50	

## Product Characteristics

Product Material	Polystyrene rigid foam
Standard Colour	Dark Grey
Usage Frequency	70 MHz to 110 GHz (depending on model)
Operating Temperature	30°C +70°C
Power Capacity	1500W/m <sup>2</sup> 750V/m
ROHS	2011/65/EU Amendment (EU) 2015/863 Appendix I
Reach	EC 1907/2006
Cleanliness	ISO14644-1 Class 4 Clean room standard (10000)
Formaldehyde Emission	GB18580-2001 E1 Class
Lifetime	40 years +

The absorbers are non-hydroscopic, giving excellent water and moisture resistance and enabling their use in high humidity chambers. With no shedding, each pyramid is cleanable and suitable for use in cleanroom environments.



## Disclaimer

All pictures are for illustration purposes only and Global EMC reserve the right to change the products aesthetics.

The information presented is subject to change and is true and complete to the best of Global EMC's knowledge. Global EMC disclaim any liability in connection with the use of this information.