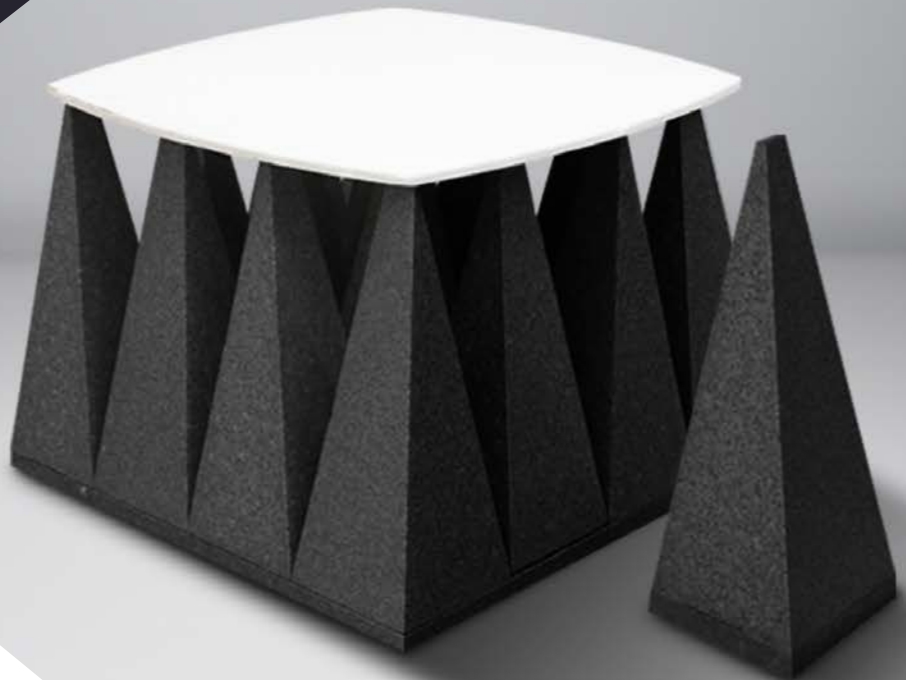


RLTF-Range Microwave Absorber

Next generation fully doped
polystyrene pyramidal absorber



GLOBAL EMC
ELECTROMAGNETIC SHIELDING & ANECHOICS EST. 1994

Applications

Superb anechoic performance. Perfect uniform precision fit. 40+ year's lifespan. Optimised return loss performance.



Radar Testing



Anechoic Chambers



Antenna Measurement



MIL-STD-461 Compliant



Research & Development

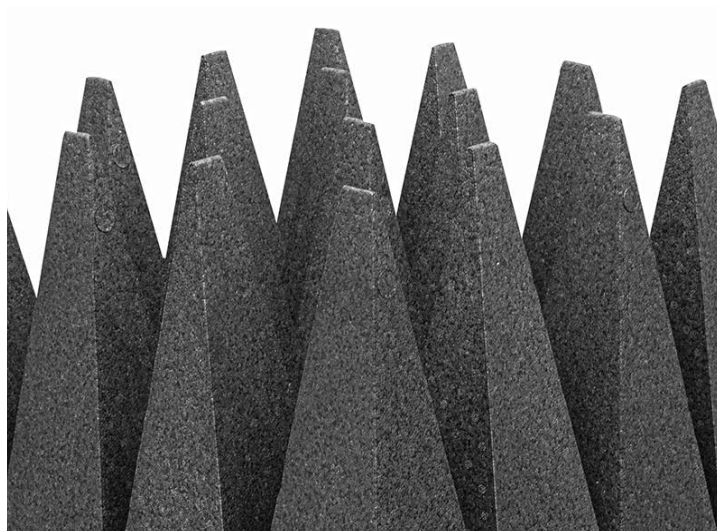
Designed for anechoic test chambers, military test chambers and antenna measurement rooms.

RLTF-Range Microwave Absorber

Global EMC's RLTF-Range is the latest development in anechoic pyramidal absorbers. High performance is achieved by the fully doped pyramid absorbers.

The easy to install "plug-in" base solution gives none reflective edges, perfect for higher frequency testing whilst also giving a uniform and precise fit every time.

Modular in construction, the absorber bases fit perfectly to different sized test chambers and measurement rooms.



Designed for test chambers for antenna measurement and radar cross section chambers. The RLTF-650 also meets the requirements to be compliant for MIL-STD-461 chambers.

The long life expectancy of more than 40 years gives an excellent product lifespan with no carbon migration over time. High wear resistance is integral to the design but should accidental damage occur, each individual pyramid is quickly removable and replaceable without any specialist tools.

This minimises maintenance downtime and maximises the facilities operating time. Each absorber pyramid has high tensile strength with no deformation over time and a sharp and precise tip, perfect for higher frequencies.

The RLTF-Range is not compatible with Ferrite tiles and is a stand-alone anechoic solution.

White end caps can be provided for aesthetic finish and to increase light reflectivity inside the chamber.

Fire Safety

Fire safety is paramount in any anechoic chamber or test measurement facility. The RLTF-Range of anechoic absorbers have been tested to ensure it's performance under fire conditions.

Each absorber is given an enhanced strengthening treatment during manufacturing for fire/flame resistance to meet UL94 - 2015 Section 8.

Physical Properties

Model	Height (mm)	Weight (kg/m ²)	Peaks Per Base	Base Size (mm)
RLTF-250	250	7.1	64	600 x 600
RLTF-450	450	10.2	16	600 x 600
RLTF-650	650	14.0	9	600 x 600

Performance

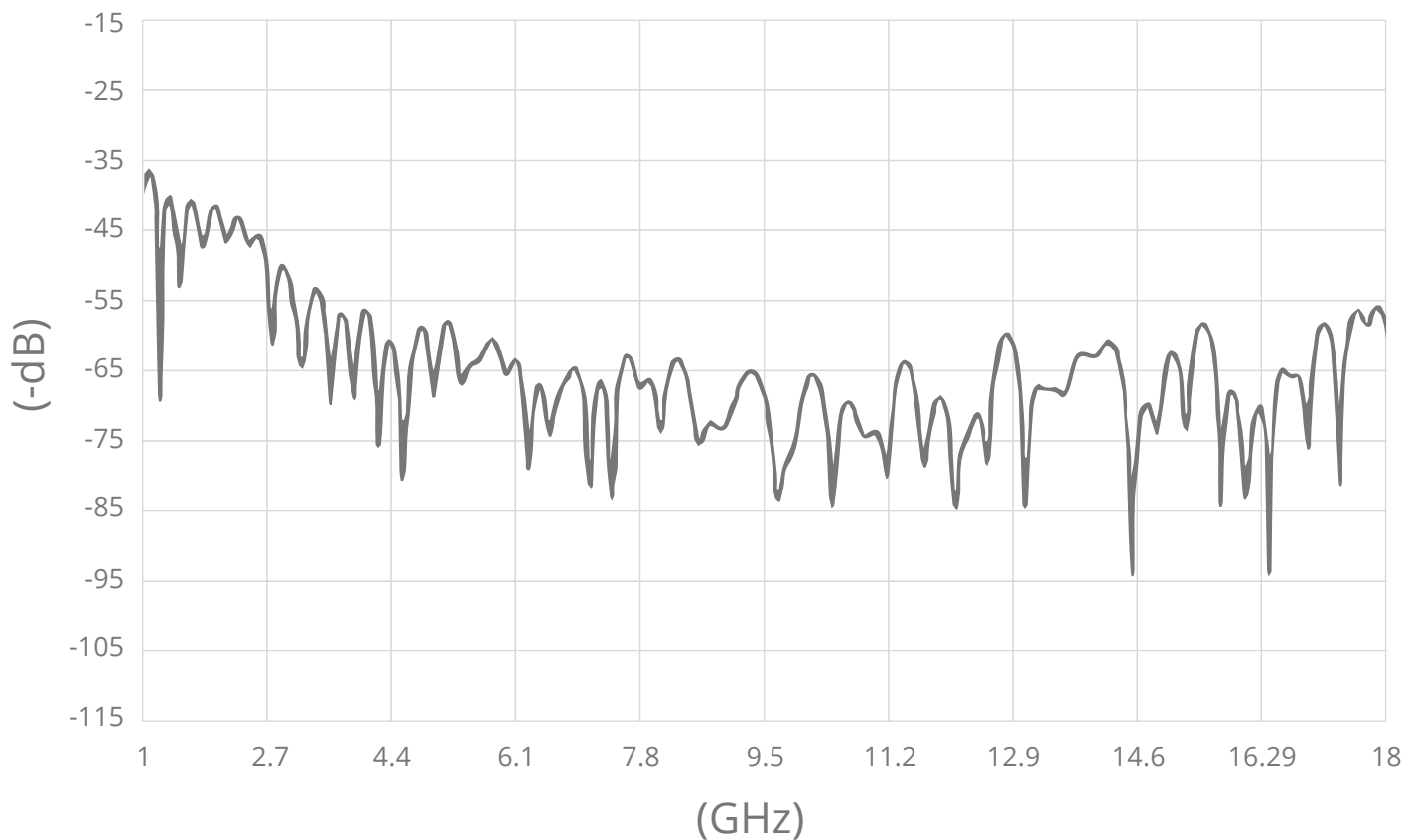
Model	Maximum reflectance at normal incidence (-dB) at frequency (GHz)								
	0.2	0.3	0.5	1	3	5	10	15	40
RLTF-250			17	25	40	45	55	55	55
RLTF-450		17	25	35	45	50	55	55	55
RLTF-650	20	25	30	40	50	50	55	55	55

Product Characteristics

Product Material	Polystyrene rigid foam
Standard Colour	Black
Usage Frequency	70 MHz to 110 GHz (depending on model)
Operating Temperature	30°C +70°C
Power Capacity	1500W/m ² 750V/m
ROHS	2011/65/EU Amendment (EU) 2015/863 Appendix I
Reach	EC 1907/2006
Cleanliness	ISO14644-1 Class 4 Clean room standard (10000)
Formaldehyde Emission	GB18580-2001 E1 Class
Lifetime	40 years +

The absorbers are non-hygroscopic, giving excellent water and moisture resistance and enabling their use in high humidity chambers.

With no shedding, each pyramid is cleanable and suitable for use in cleanroom environments.



Disclaimer

All pictures are for illustration purposes only and Global EMC reserve the right to change the products aesthetics.

The information presented is subject to change and is true and complete to the best of Global EMC's knowledge. Global EMC disclaim any liability in connection with the use of this information.