



ARMADILLO

MAGNETIC FIELD CABLE CONTAINMENT



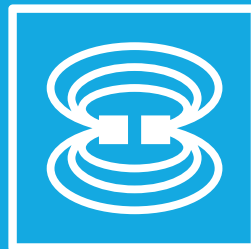
GLOBAL EMC
ELECTROMAGNETIC SHIELDING & ANECHOICS EST. 1994

Armadillo

Magnetic field cable containment for 50/60Hz



50Hz/60Hz



Magnetic Field



Building Shielding

VLF/ELF Magnetic field shielded containment / trunking / ductwork for EMF suppression of high current cables, risers and bus-bars.

Magnetic Field Cable Containment

High current cables and bus bar systems cause significant amounts of magnetic fields.

The level of field is dependent on the amount of current carried at any particular time.

When the current load changes through equipment cycling and equipment being turned on/off then the fields will change.



These magnetic field emissions can cause problems in two ways:

- *The field limits* – for EMC the limit is 3.75uT

There is also a recommendation based on a child leukaemia report: 100uT max for public spaces and 0.4uT max for long exposure and residency.

- *Changing fields* – some sensitive equipment such as TEM machines/EEG equipment/e-beam machines cannot tolerate changing magnetic fields and still work at optimum accuracy

High Magnetic Permeability

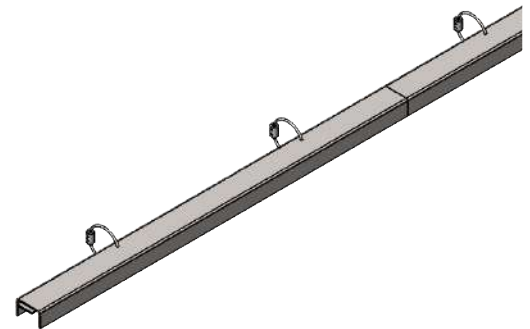
The Global EMC ARMADILLO shielded containment system attenuates the field by a ratio of circa 10:1 so as to help attenuate the magnetic flux emanations via use of 3mm thick high magnetic permeability materials and a high conductivity design.

Sizes	
50mmx 50mm	Size 1
100mm x100mm	Size 2
150mm x 100mm	Size 4
300mm x 125mm	Size 4 (Riser)

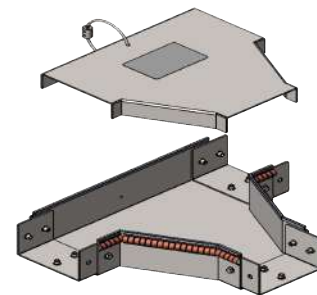
Notes:

- The lids are easily removed and re-installed as 'push on'.
- There is a retaining lanyard for each lid.
- The lids can have heat dissipation slots or can be solid.
- Sizes 1, 2 & 3 have a full range of transitions/reducers.

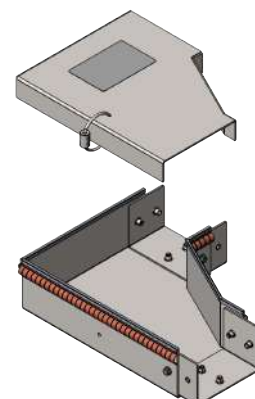
Transitions	To Suit Section	Part No
2m Containment Lengths	50mm x 50mm	AR-CL-1
2m Containment Lengths	100mm x 100mm	AR-CL-2
2m Containment Lengths	100mm x 150mm	AR-CL-3
2m Containment Lengths	300mm x 125mm	AR-CL-4



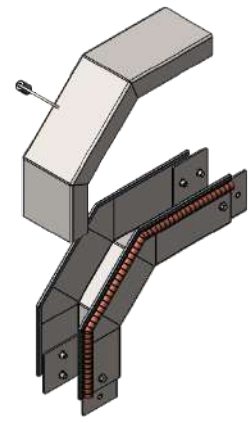
Transitions	To Suit Section	Part No
Flat Tee	50mm x 50mm	AR-T-1
Flat Tee	100mm x 100mm	AR-T-2
Flat Tee	100mm x 150mm	AR-T-3



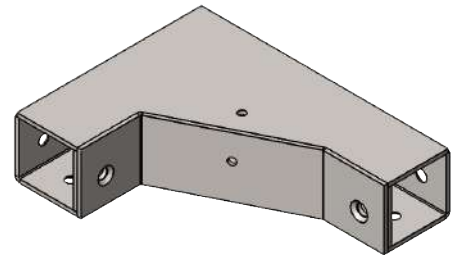
Transitions	To Suit Section	Part No
90° Bend Face Lid	50mm x 50mm	AR-BF-1
90° Bend Face Lid	100mm x 100mm	AR-BF-2
90° Bend Face Lid	100mm x 150mm	AR-BF-3



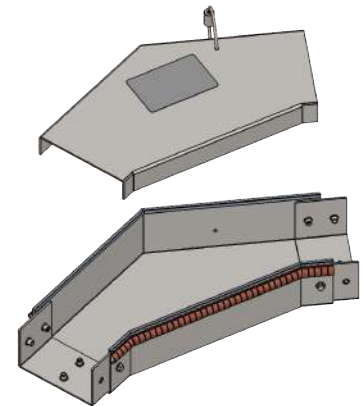
Transitions	To Suit Section	Part No
90° Bend Outside Lid	50mm x 50mm	AR-BO-1
90° Bend Outside Lid	100mm x 100mm	AR-BO-2
90° Bend Outside Lid	100mm x 150mm	AR-BO-3



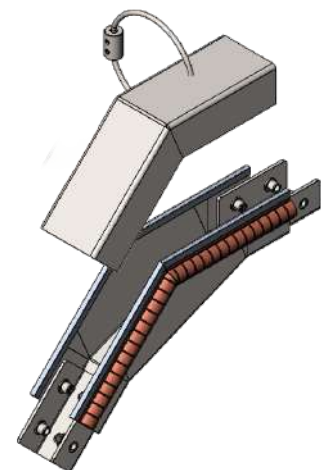
Transitions	To Suit Section	Part No
90° Bend Inside Lid	50mm x 50mm	AR-BI-1
90° Bend Inside Lid	100mm x 100mm	AR-BI-2
90° Bend Inside Lid	100mm x 150mm	AR-BI-3



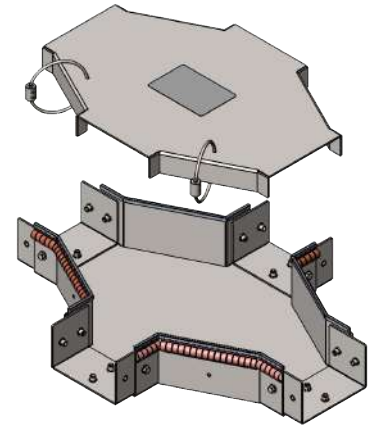
Transitions	To Suit Section	Part No
45° Bend Face Lid	50mm x 50mm	AR-45-F-1
45° Bend Face Lid	100mm x 100mm	AR-45-F-2
45° Bend Face Lid	100mm x 150mm	AR-45-F-3



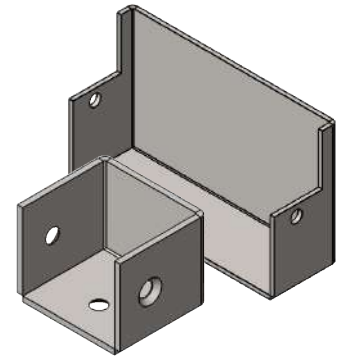
Transitions	To Suit Section	Part No
45° Bend Outside Lid	50mm x 50mm	AR-45O-1
45° Bend Outside Lid	100mm x 100mm	AR-45O--2
45° Bend Outside Lid	100mm x 150mm	AR-45O--3



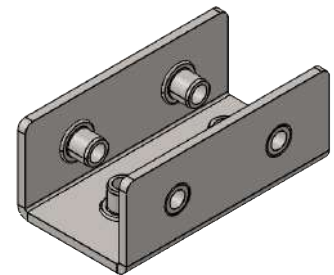
Transitions	To Suit Section	Part No
4 Way Transitions With Face Cover Only	50mm x 50mm	AR-4W-1
4 Way Transitions With Face Cover Only	100mm x 100mm	AR-4W-2
4 Way Transitions With Face Cover Only	100mm x 150mm	AR-4W-3



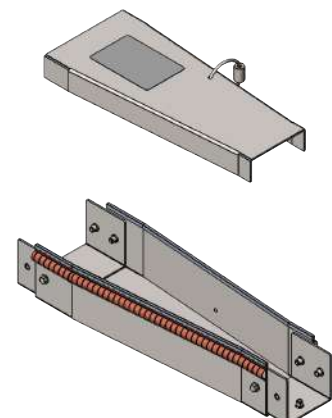
Transitions	To Suit Section	Part No
End Covers	50mm x 50mm	AR-EC-1
End Covers	100mm x 100mm	AR-EC-2
End Covers	100mm x 150mm	AR-EC-3



Transitions	To Suit Section	Part No
Spare Connection Saddles	50mm x 50mm	AR-S-1
Spare Connection Saddles	100mm x 100mm	AR-S-2
Spare Connection Saddles	100mm x 150mm	AR-S-3



Transitions	Part No
Reducer	AR-R-1/2
Reducer	AR-R-2/3





Disclaimer

All images are for illustration purposes only and Global EMC reserve the right to change the products aesthetics.

The information presented is subject to change and is true and complete to the best of Global EMC's knowledge. Global EMC disclaim any liability in connection with the use of this information.