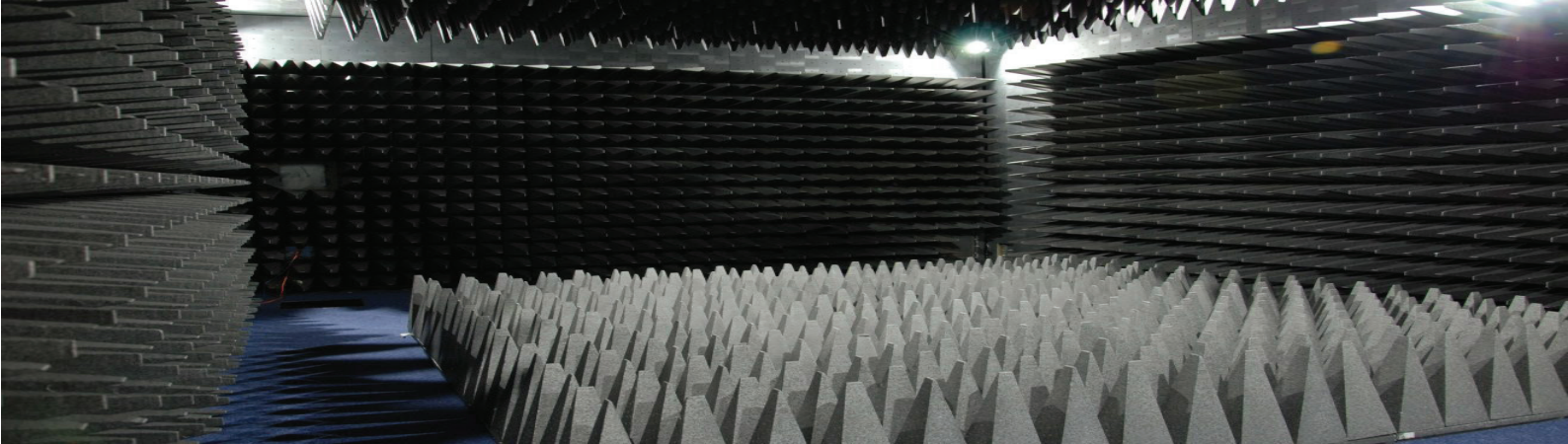


3m Pre-Compliant Semi-Anechoic EMC Test Chamber



GLOBAL EMC
ELECTROMAGNETIC SHIELDING & ANECHOICS EST. 1994



What Is Pre-compliance Testing?

Pre-compliance testing sets out to mimic as closely as possible a compliant and fully accredited test lab. Global, European or national standards dictate the required performance and tests required on each electrical or electronic item. During product development, on-going pre-compliant tests may highlight any potential issues that would stop a new product from meeting the relevant standard(s) when final compliance testing takes place.

Using a pre-compliant test chamber gives a dependable and trustworthy indication that the product should pass once submitted for final approval.

This offers a long term and affordable way of designing products that will meet EMC radiated emission and immunity standards without continuous use of external test labs. This can save time, money and reduce or eliminate project delays due to failures and re-tests.

Versatile & Adaptable



Each pre-compliant EMC test chamber is designed specifically for your requirements and space available. Using 3D modelling and modular shielding design, this enables every Test Chamber to be designed and built to maximise space available and give the highest performance and consistent measurements.

Independently tested by a UKAS ISO 17025 test body, the test chamber is verified to give you the assurance that it is designed and built to the highest standards. A full set of independent, third-party test results are issued upon completion of each facility.

From low emission LED lighting, turntables, air conditioning and small power, each test chamber is fully customisable with our large range of accessories and test equipment available. Full warranties, documentation and after-sales support is provided for every part of the test chamber.

For more information on Global EMC, visit our website by scanning the QR code



+44 (0)1623755539



www.globalemcc.co.uk



Info@globalemcc.co.uk



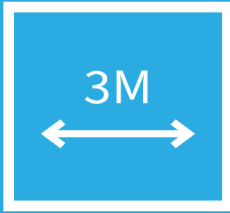
**MADE in
BRITAIN**



SCAN ME

CHOOSE THIS TEST CHAMBER FOR

Suitable for testing electronic equipment to global or national standards, this chamber provides quick and versatile EMC compliance testing in your own onsite facility. The speed and efficiency of research and development are greatly increased as products can be tested, changed if necessary and quickly re-tested. This gives confidence of conformity before final compliance testing and eliminates re-test costs.



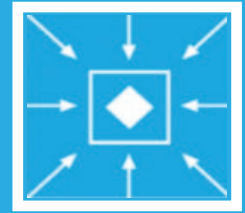
3 Meter
Measurements of up to 3 meters between the antenna and equipment area under test (EUT).



Pre-Compliant
Pre-compliant Radiated Emission - Electromagnetics interference (EMI) to CISPR 16-1-4/EN55016-1-4.

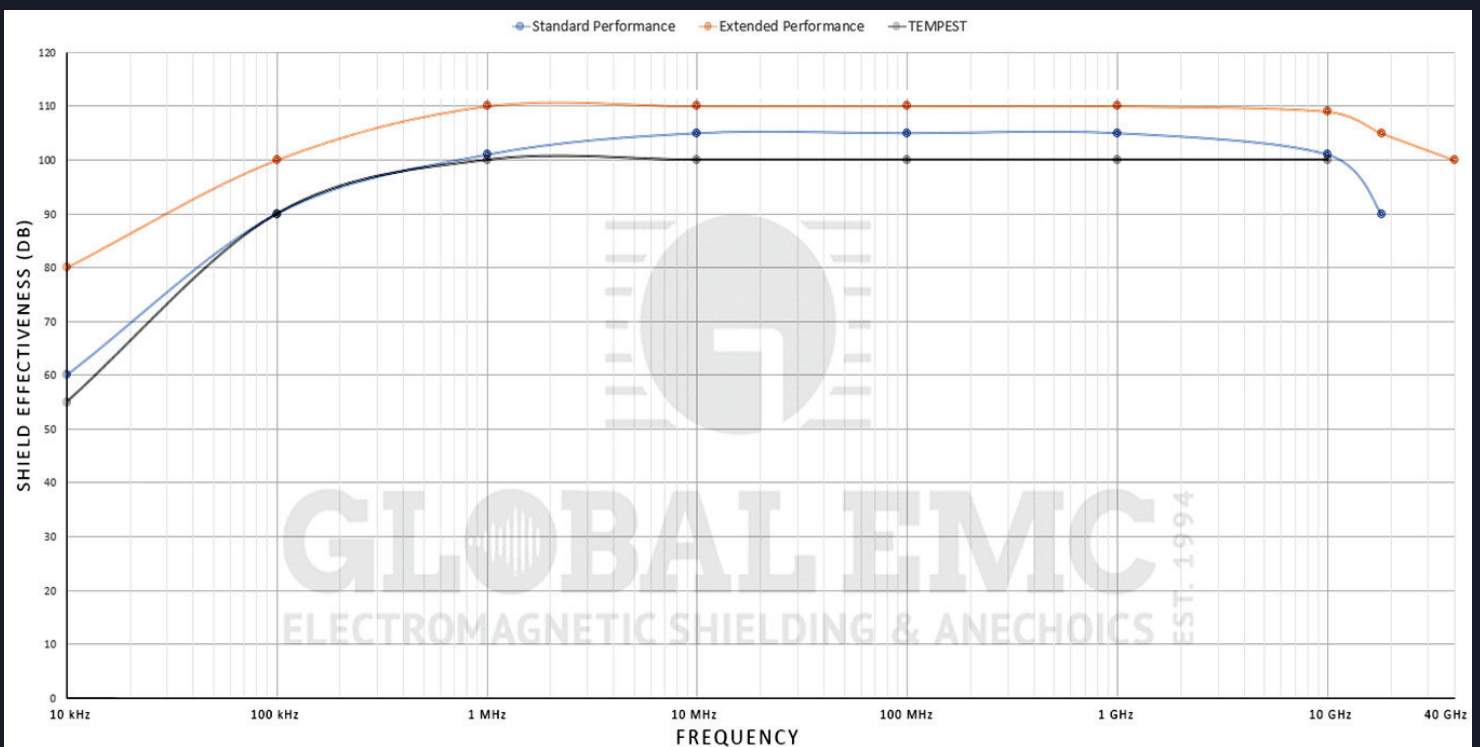


R & D
This test facility is the perfect solution for the research and development of new and electronic products.



Immunity
Compliant Radiated Immunity - Electro-Magnetic Susceptibility (EMS) testing to EN/IEC6100-4-3.

SHIELDING EFFECTIVENESS TESTED TO EN50147-1



AT A GLANCE

3M

A 3-meter test distance is required between your antenna and equipment under test.

The separation distance gives the chamber its distinctive rectangular shape.

Pre-Compliant

EMC pre-compliance testing mimics the compliance test set up within an acceptable margin to uncover potential problems and reduce risk of failure prior to the expensive compliance test stage.

EMC

Electromagnetic compatibility (EMC) is the concept of enabling a device to operate correctly in its intended environment, with or in the presence of other electrical devices or sources of EMI.

Test Facility

The external construction is a shielded room, using a Faraday cage principle. This is to stop unwanted signals from the external environment entering the chamber and causing interference whilst tests are being performed.

3M PRE-COMPLIANT SEMI-ANECHOIC EMC TEST CHAMBER

Pre-compliant test chamber for emission measurements to CISPR 16-1-4 from 30 MHz to 18GHz.

Shield effectiveness to EN50147-1.

Bespoke solution upon request. Test facility can be configured to your exact requirements.

Industry-leading low maintenance shielded door with copper beryllium knife edge seals.

Latest Technology high-performance GF 102 ferrite to all walls, ceiling and partial floor covering.

Compliant test chamber for immunity measurements to EN/IEC61000-4-3.

Design and manufactured to the highest standards in Great Britain.

Up to 3 meters measuring distance between the Antenna and EUT.

Lighting, power, filter, penetration and static ventilation panels all as standard.

Moulded polystyrene pyramidal Hybrid Absorbers to all walls, ceiling and partial floor covering. (Absorber coverage as far as physically possible).

External Dimensions
7000mm (L) x 3500mm (w) x 3000mm (H)*.

Shield
Modular 2mm steel "pan" shield.

Filters
1 x 32A 230V Single Phase (2 line).

Access Ramp
This feature is optional.

Shielded Pedestrian Door (Clear Opening)
1000mm (W) x 2000mm (H)*.

Frequency Test Range
30 MHz to 18 GHz (40GHz optional).

Penetration Panel Connectors
2 x Precision N type, & 2 x Fibre.

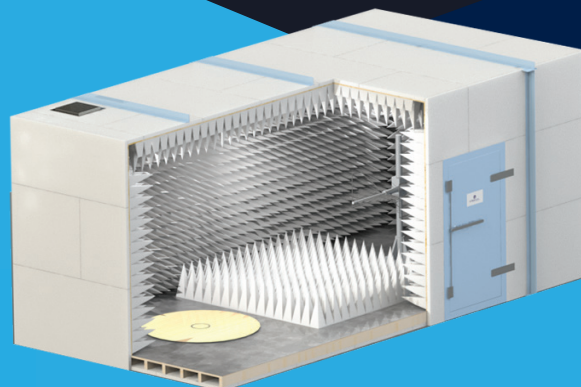
Lighting
4 x LED Lighting 1 x Emergency Light.

Steel Structure
Self-supporting structure to industry standards.

Floor Loading (Standard)
500kg/m²*.

Honeycomb Vents
2 x 300mm (W) x 300mm (H) (static air).

Power Distribution
4 x 230V AC DSSO Sockets.



Additional Options Include: Maat, Air Conditioning, CCTV, Forced Air (Fans) or Air Conditioning/ HVAC, DC Filters, white end caps to absorbers, Additional filters & Audio communication, 1200mm free-standing turntable.
*All dimensions and quantities can be altered upon request (subject to compatibility).